



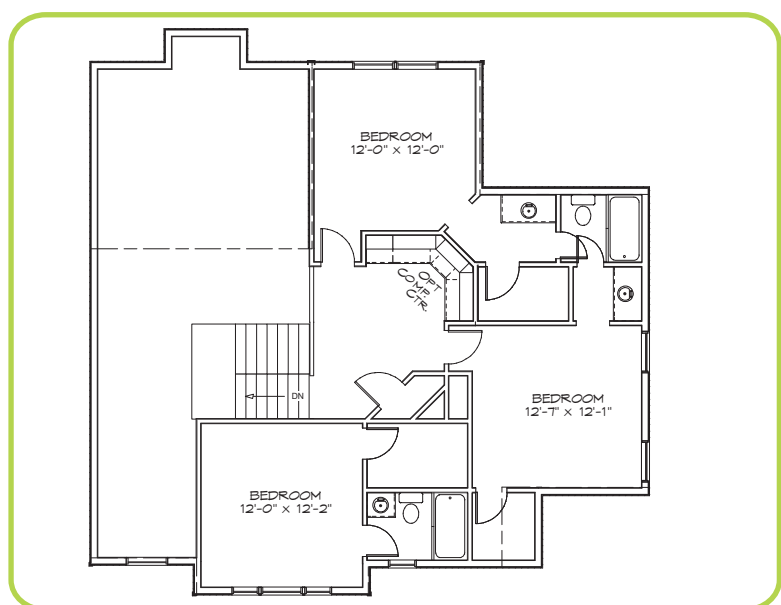
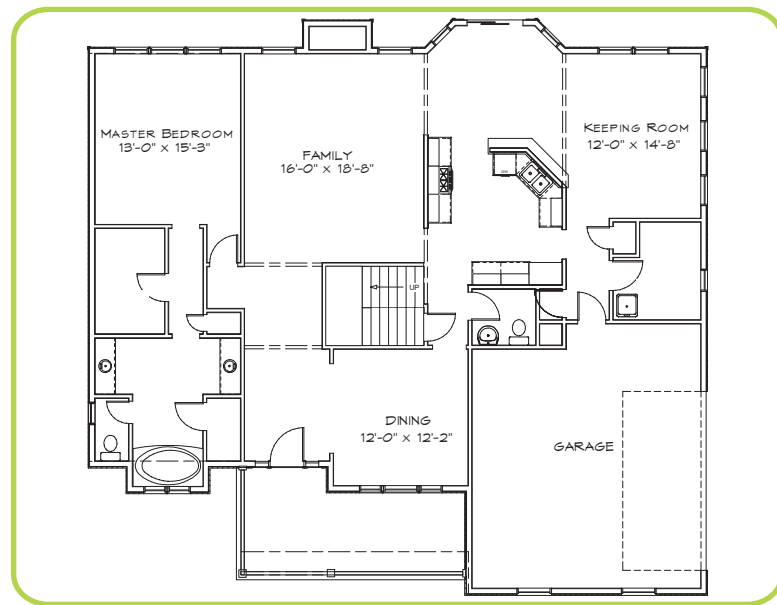
BUILDING & DESIGN CORPORATION

for more information
219.775.0510
buildwithck.com

The Hopkins from \$341,644.00 + homesite



Sometimes the smallest details make the biggest difference; from exterior embellishments to delicate ceiling treatments, this design is full of subtle accents that make it a unique and personal home. Inside, decorative columns and high plant shelves define the foyer and vaulted two-story family room. Delectable dishes are sure to be served up from the angled kitchen, whether in the sunny breakfast nook or the formal dining room. The master suite inhabits the left wing; a bay window offers panoramic views, and the vaulted bath features a step-up tub. Upstairs, three bedrooms (one with private bath) share a children's loft that includes a built-in desk. The Hopkins is an elegant home for a finicky buyer.



we build on your lot...or ours!

Elevations shown do have some options portrayed. CK Building and Design is an equalhousing company. Contact CK Building and Design Corporation for more information about these homes. Home designs are copyright CK Building and Design Corporation. No reproduction allowed.



Quality Standard Selections

CK Building and Design Corporation's homes are built with distinctive quality construction, gourmet kitchen features, top of the line bathroom amenities, and other creative and innovative features. Browse through our standards listed below.

Exteriors

- Stone or Brick Exteriors per print
- High Strength Double-4 Dutch Lap Vinyl Siding
- Architectural 30-Year Dimensional Shingle
- High Efficient Foundation Insulation Blanket on interior concrete walls
- Oversized Low-E/Argon Filled Gas Windows and Patio Doors for Superior Insulating Values
- (2) - Exterior GFI Electrical Outlets
- (2) - Frost Proof Hose Connections
- 2 Car Insulated Garage Doors
- Premium Entry Doors
- Address Stone or Plaque
- Concrete Driveway
- Concrete Patio (14' x 14') per plan
- Exterior Concrete Sealed for Longevity and Durability

Structural Detail

- 200AMP Electrical Service
- Poured Concrete Foundation with Exterior applied Damp Proofing Sealant
- **2 x 6 Exterior Walls**
- **Zip-Wall Structural 1 Sheathing**
- R-19 Exterior Wall Insulation with Anti-Air-Infiltration System
- Sound Proofing all bathroom common walls and bedroom common walls
- Exterior and Interior Walls 16" On-Center
- Floor Joists Calculated to Exceed Code Requirements - 16" On-Center
- **Advantech Subflooring** glued and nailed with Limited Lifetime Warranty (30% stronger than traditional OSB Subflooring).
- Contractor Framed Roof 16" On-Center
- Re-Inforced Window Exterior Sealing System
- 92% + "Carrier" Brand Name Heating Equipment
- 13 - Seer "Carrier" Brand Name Air Conditioning
- 50 Gallon High Efficient Quick Recovery Hot Water Tank
- HERS Rating for Lower Energy Bills
- Mechanized Air Exchange System for HERS Rating
- 9' First Floor Walls
- 8' Second Floor Walls
- All Drywall Glued and Screwed
- 5/8" Drywall in Garage
- Easy Care Wire Shelving
- All Hot and Cold Plumbing Installed in **Copper**

- All Vents Exhausted to Exterior

Kitchens and Bathrooms

- Choice of Quality Cabinetry
- Choice of Stains Included
- Ge Microwave with Hood, Dishwasher and 1/3 Horsepower Garbage Disposal
- Stainless Steel Drop-In Double Bowl Kitchen Sink
- Stainless Steel Pull-Out Kitchen Faucet
- **Granite** Counters in Kitchen
- Pedestal and Toilet in Powder Room (per plan)
- Raised Vanity Heights in Master Bathroom
- Double Bowl Sinks in Master Bathroom per Model
- Marble Counters with Integral Bowls in baths
- Delta Leland Chrome Faucets
- Oversized Tub in Master Bathroom (per plan)
- Stand-Up Shower in Master Bathroom (per plan)
- Plate Glass Vanity Mirrors
- Ceramic Tile in Bathrooms and Laundry Rooms
- Hardwood Flooring in Kitchen

Interior Details

- Solid Core Interior Primary Doors
- 6 Panel Door Styles
- Choice of Interior Paint Colors
- Nickel Door Hardware
- 4 1/4" Traditional Base Trim throughout
- **Heatilator Gas-Burning Fireplace** with Electronic Ignition for Higher Efficiency
- Raised Fireplace Hearth with Designed Wood and Stone Surround
- All Bedrooms Wired for Ceiling Fans
- Generous Light Fixture Allowance per Model
- Hardwood Flooring in Entry, Kitchen, Main Floor Hall, and Powder Room

CK Building and Design Corporation offers many opportunities for additional personal touches. Is there something you have always wanted, please let us know so we can incorporate your ideas into your new home.